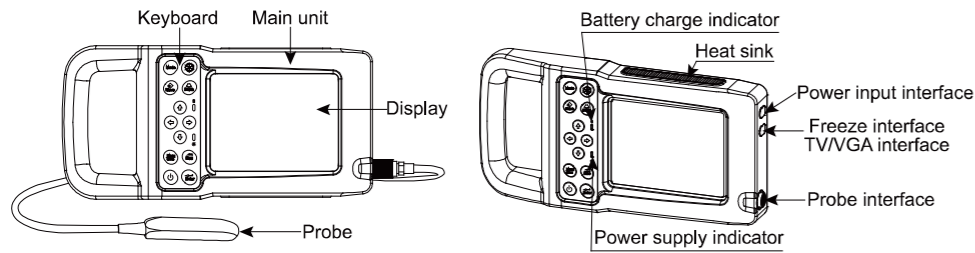


KX5600F Quick Start Guide

Typical configuration

- | | |
|---|--------|
| 1. Main unit | 1 unit |
| 2. 6.5MHz animal transrectal linear array probe | 1 PC |
| 3. Power adapter | 1 PC |
| 4. Power cable | 1 PC |
| 5. Shutter release | 1 PC |
| 6. Probe holder | 1 PC |
| 7. Strap | 1 PC |
| 8. Leather bag | 1 PC |
| 9. Plastic sealed box | 1 PC |

Components Name



Parts of the probe

Take 6.5MHz animal transrectal linear array probe for example:

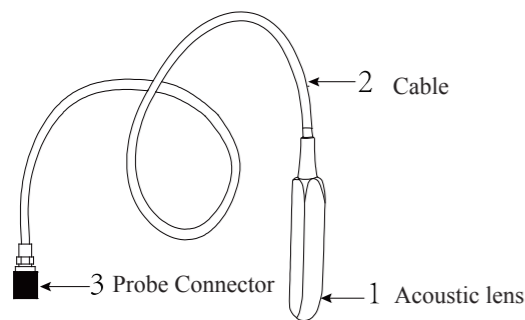


Figure: Parts name of 6.5MHz animal transrectal linear array probe

Function Keys Description

SN.	Function keys	Function
1		1. In real-time status, select mode; 2. In frozen status, text input, exchange the starting point and end point of the measurement, etc.
2		1. Main-menu; 2. In frozen status, save image/read image/cine loop.
3		Enter Confirm
4		Freeze/Unfreeze the image; Hold down freeze key for some time to achieve screen display up/down reverse.
5		One-key storage image
6		Adjust the imaging depth
7		Direction Keys
8		Quit various states
9		Power switch

Technical Specifications

1. Adapter ratings: 100-240V~, 1.2-0.6A, 50-60Hz
2. Output of adapter: DC12.8V 3.0A
3. Main device rating: DC12.8V 3.0A
4. Internal supply voltage: DC10.89V-12.6V
5. Main unit dimension: approx. 285 * 143 * 35mm³(L * W * T)
6. Main unit net weight: 1.1kg (excluding accessories)

System Installation

Please carefully read through and fully understand the use-method before installing the equipment, and check the goods for its completeness.

1. You can hold the equipment handle to use or be hung on the chest to use.

The equipment is hung on the chest to use:

- a. Take out the instrument and accessory, first put the equipment into the soft leather bag;
- b. Stick the Velcro of leather bag to the handle of the main unit, and then install the strap on the rings of the leather bag;
- c. Finally adjust the length of the strap, and hang it on the neck for use.



2. Ultrasonic Probe Installation

Warning: Do not use the probe not provided by our company, otherwise the equipment and the probe will cause damage, and may cause fire in extreme cases.

Attention:

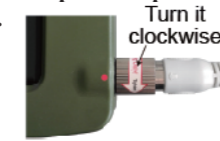
1. Turn off the ultrasonic system before disconnecting the probe. Disconnecting the probe with system power on may damage the system or probe.
2. Before disconnecting the probe, place the cable and probe on a stable and leveled position so that the probe may not be damaged or injury person by unexpected fall.
3. Probe is highly sensitive to shake, be used with caution. About probe's use and cleaning, the details see the relevant sections.

2.1 Ultrasonic Probe Connection

Warning: Before connecting or using the probe, make sure that the probe, connecting cable and connector are in normal condition (free of cracks or drop). Use of defective probe may cause electric shock.

1. Turn off the system, pinch the oval position on both sides of the probe cable while keep the arrow above, as shown;
2. As shown below, insert the probe connector horizontally into the probe socket labeled "PROBE" of the main unit, when inserting the probe, the notch on the probe connector should be aligned with the position of the red dot mark on the main unit housing, and push the probe firmly into the probe socket of main unit;
3. After pushed in place, hold the machine with one hand and rotate the ring clockwise with one hand until the probe is locked.

Note: Lock the ring clockwise in the direction indicated on the label. Before turning the ring clockwise, be sure to push the probe connector into place and then rotate to prevent the ring from idling.



Probe connection schematic

2.2 Ultrasonic Probe Disconnection

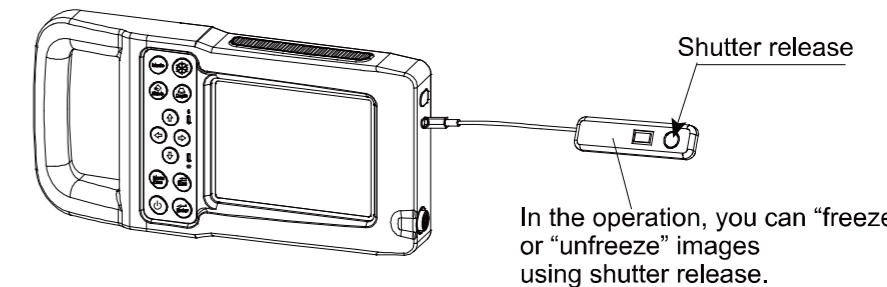
1. Turn off the system, pinch the oval position on both sides of the probe cable with one hand and rotate the probe ring counterclockwise with the other hand;
2. When rotating counterclockwise, pull out the ultrasonic probe connector vertically when the ring touches the probe cable.



Probe disconnection schematic

3. Shutter Release Installation

Install shutter release to Freeze interface (TV/VGA interface) as shown in the figure.



In the operation, you can "freeze" or "unfreeze" images using shutter release.

System Maintenance

1. System Cleaning and Disinfection

Warning: Turn off the equipment and pull out the power supply wire before cleaning equipment. It may cause electric shock if clean the system under power is on.

Warning: The waterproof grade of the equipment is IPX4 (no adverse effect on splashing water in all directions). Do not spill water or liquid into the equipment during cleaning or maintenance. Failure to do so may cause malfunction.

Warning: Do not place the ultrasonic probe connector into water or disinfection, as it may cause electric shock or the malfunction of probe.

2. Clean the probe

- (1) Rinse the probe with water or soapy water to remove all contaminants, or use a soft urethane sponge to wipe the probe. Do not use brushes as it may damage the probe.
- (2) After finishing the rinsing, use a sterilized cloth or gauze to wipe the water on the surface of probe. Do not dry the probe by heating it.

3. High-level disinfection

Please follow the disinfection method provided in this user's manual for disinfection.

- (1) Before disinfection, wear sterilized gloves to prevent possible infection;
- (2) You must clean the probe before disinfection. Recommend the solution to disinfect in the following table.

Glutaraldehyde-based disinfectant:

Chemical Name	Reagent Name	Step
Glutaraldehyde (2.4%)	Cidex Glutaraldehyde disinfectant	Please refer to the instructions of the solution for details.

Non-glutaraldehyde-based disinfectant:

Chemical Name	Reagent Name	Step
Phthalaldehyde solution (0.55%)	Cidex OPA	Please refer to the instructions of the solution for details.

- Please follow the instructions about disinfectant concentration and disinfection method, as well as the precautions about disinfectants provided by disinfectant provider. But do not rinse or soak the probe connector or close to connector cable.
- The soaking time of probe in the disinfectant is limited to the minimum time recommended by disinfectant manufacturer (e.g., Cidex OPA manufacturer recommended minimum 12 minutes).
- Please follow local laws and regulations to choice the disinfectants.

- (3) After disinfection, rinse the probe with a large number of sterile water (about 2 gallons) for at least one minute to remove the residual chemicals. You may follow the recommended method by the disinfectant manufacturer to rinse.
- (4) After finishing the rinsing, use a sterilized cloth or gauze to wipe the water on the surface of probe. Do not dry the probe by heating it.

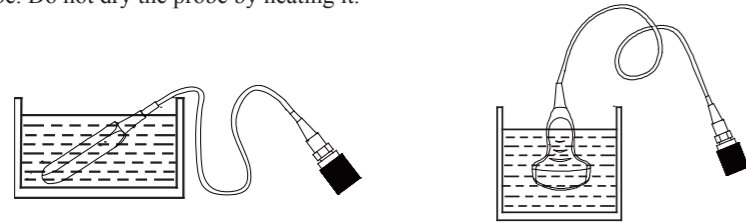


Fig. Immersion disinfection of transrectal probe (sketch map)

Fig. Immersion disinfection of probe (except transrectal probe)

⚠ Attention:

1. It is a normal phenomenon that color of the acoustic lens may change and color of the probe label may fade away.
2. Repeated disinfection may damage the probe, please check the probe's performance periodically.

4. Check probe after cleaning and disinfection

- (1) Check the probe enclosure and its cable to ensure they are free of abnormality (such as scuffing, cracks or drop-off);
- (2) The sound window of probe is thin; ensure that there are no any abnormality on the sound window, such as scuffing, cracks, peeling, bulge and drop-off.

5. Clean the probe cable and its connector

- (1) Clean the probe cable and its connector with soft, dry cloth.
- (2) In case of die-hard blots, clean with soft cloth dipped in moderate detergent and then air-dry it.

6. Clean the display screen

- (1) Use a soft cloth to clean the display screen;
- (2) In case of die-hard blots, clean with soft cloth dipped in glass cleaner and then air-dry it.

7. Clean the control panel, shell

Clean the instrument surface with soft, dry cloth or with soft cloth dipped in moderate water cleaning media to remove the blots, and then dry the instrument with soft, dry cloth or with air.

8. Use and Maintenance for the Rechargeable Lithium Ion Battery Pack

1. Plug the output port of power adapter into the power input interface of the main unit to charge. When charging, the battery charge indicator is in orange flash and green light state; when fully charged, the indicator is in an orange and green light state.
2. The shutdown charging time is about 5 hours; over-charging or discharging will shorten the battery life. The full charged battery can be used about 5 hours.

3. Battery is consumable; the battery cycle-life is based on the times of charge and discharge as unit. When the use time reduced significantly compared with normal conditions, the battery should be promptly replaced.
4. The excess high or low temperature will affect the charging and discharging performance, and short the battery life and capacity.

9. Troubleshooting

To ensure normal operation, users are recommended to prepare a proper maintenance plan. If the following problems occur on starting up the machine, try to make corrections following the method in the table. If the problem remains unsolved, contact International Trade Dept of Kaixin for support.

Trouble	Correction
Power supply indicator does not light and the screen does not display when starting the machine.	1. Check power supply. 2. Check power supply cord and plug. 3. Check power adapter.
Character and gray scale are displayed, but no ultrasonic image on the screen.	Probe is not properly connected. Turn off the power and reconnect the probe.
Intermittent stripe, snow, or far-field interference appears on screen.	1. Check power supply.(spark interference present) 2. Check environment.(source of interference around the machine, such as electric motor, ultrasonic atomizer, automobile, computer or other interference) 3. Check power plug/socket of the instrument or probe connectors. They shall be properly contacted.
Image display is not clear.	1. Adjust the total gain, near field gain, far field gain. 2. Adjust the brightness and contrast level.
Control panel malfunction.	Restart the machine by turning off the main unit power.



Authorized Distributor
AISON INTERNATIONAL
Stigs Center 2B, 42246, Hisings
Backa, Sweden
Tel:0046-73-5543108
Email: info@autoclave.se
www.autoclave.se

XUZHOU KAXIN ELECTRONIC INSTRUMENT CO., LTD.

 Kaixin Mansion, C-01, Economic Development Zone,
Xuzhou, Jiangsu, China
Post Code: 221004
Tel: +86-516-87732932/87733758
Fax: +86-516-87732932/87792848
Website: <http://www.kxele.com>
E-mail: info@kxele.com

SAVE PAPER, SAVE TREES ON THE EARTH,
PLEASE VISIT WWW.KXELE.COM TO DOWNLOAD
DETAILED USER MANUAL WHEN NECESSARY.

Information contained in this manual is subject to change
without further notice.